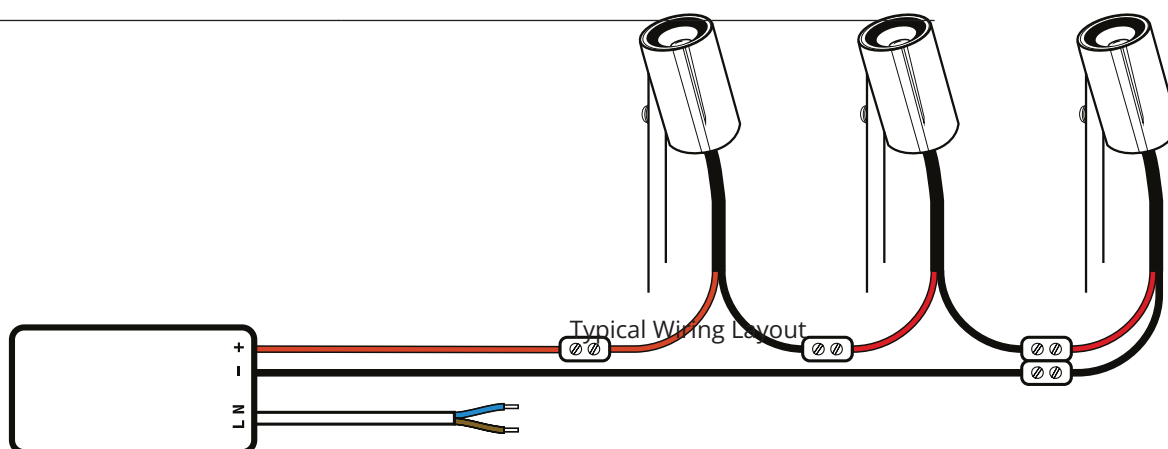
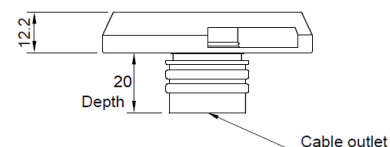
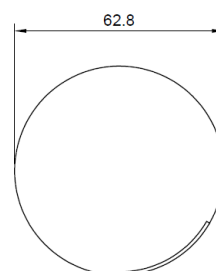


# PATH MARKER SPECIFICATION

*Hudson*  
lighting

<b>Power</b>	1W option (350mA) 2W option (350mA) 3W standard (350mA)
<b>Ingress protecton rating</b>	IP68 - Each tested at 2m for 24 hours
<b>Cable</b>	0.5mm PVC 2m - Longer on request
<b>LED Colour</b>	3000K standard 4000K standard 2700K standard 1800K to 6500K on request
<b>Optics</b>	60 degree single opening standard. Any other available on request including number
<b>CRI</b>	80+
<b>Material</b>	Tops: 316 Stainless steel Brass Copper Black powder coat Nato green powder coat CorTen powder coat Custom RAL
<b>Warranty</b>	10 Years
<b>Efficiency</b>	187 lm/W at chip. x 360 degrees / outlet
<b>Input Power</b>	350mA wired in series
<b>Replacement Components</b>	LED reverse voltage circuit board with cable Top Bottom Optic if applicable
<b>Cut Out Diameter</b>	25mm
<b>Depth</b>	20mm plus cable



**MADE IN ENGLAND**

[hudsonlighting.co.uk](http://hudsonlighting.co.uk)